

FURTUNURI HIDRAULICE

1. FURTUNURI CU INSERTIE METALICA

1.1. Hydraulic hoses steel braid EN 853 1SN / SAE 100 R1AT



- **Composition:** Inner tube: special synthetic rubber resistant to hydraulic oil.
Reinforcement: one braid of steel wire.
Cover: synthetic rubber resistant to oil, abrasion and weather.
- **Working temperature:** From -40° C to +100° C.

Part n°	Ø in	DN	Ø out	Working Pressure (bar)	Working pressure (psi)	Burst pressure (bar)	Burst pressure (psi)	Vacuum (bar)	Bending radius (mm)	Weight (kg/m)
MS223003	5	3/16"	11,8	250	3625	1000	14500	-0,8	90	0,2
MS223004	6,3	1/4"	13	225	3262,5	900	13050	-0,8	100	0,25
MS223005	8,2	5/16"	14,6	215	3117,5	850	12325	-0,8	115	0,31
MS223006	9,8	3/8"	17	180	2610	720	10440	-0,8	130	0,36
MS223008	12,9	1/2"	20,1	160	2320	640	9280	-0,8	180	0,45
MS223010	16,2	5/8"	23,3	130	1885	520	7540	-0,8	200	0,52
MS223012	19,2	3/4"	27,4	105	1522,5	420	6090	-0,8	240	0,65
MS223016	25,3	1"	35	88	1276	350	5075	-0,8	300	0,91
MS223020	32,2	1"1/4"	42,8	63	913,5	250	3625	-0,6	420	1,3
MS223024	38,2	1"1/2"	49,2	50	725	200	2900	-0,6	500	1,7
MS223032	51,2	2"	63	40	580	160	2320	-0,6	630	2



1.2. Hydraulic hoses steel braid

EN 853 2ST / SAE 100 R2A Hose EN 853 2ST / SAE 100 R2A Hose



- **Composition:** Inner tube: special synthetic rubber resistant to hydraulic oil.
Reinforcement: two braids of steel wire.
Cover: synthetic rubber resistant to oil, abrasion and weather.
- **Working temperature:** From -40° C to +100° C.

Part n°	Ø in	DN	Ø out	Working Pressure (bar)	Working pressure (psi)	Burst pressure (bar)	Burst pressure (psi)	Vacuum (bar)	Bending radius (mm)	Weight (kg/m)
MS350904	6,3	1/4"	17,2	400	5800	1600	23200	-0,95	100	0,36
MS350905	8,2	5/16"	19	350	5075	1400	20300	-0,95	115	0,45
MS350906	9,8	3/8"	21,2	330	4785	1320	19140	-0,95	130	0,54
MS350908	12,9	1/2"	24,5	275	3987,5	1100	15950	-0,95	180	0,65
MS350910	16,2	5/8"	27,6	250	3625	1000	14500	-0,95	200	0,8
MS350912	19,2	3/4"	31,6	215	3117,5	850	12325	-0,8	240	0,91
MS350916	25,3	1"	39,3	165	2392,5	650	9425	-0,8	300	1,35
MS350920	32,2	1" 1/4	52,4	125	1812,5	500	7250	-0,8	420	2,15
MS350924	38,5	1" 1/2	58,8	90	1305	360	5220	-0,8	500	2,65
MS350932	51,2	2"	69,8	80	1160	320	4640	-0,8	630	3,42



1.3. Hydraulic hoses steel braid EN 853 2SN / SAE 100 R2AT Hose



- **Composition:** Inner tube: special synthetic rubber resistant to hydraulic oil.
Reinforcement: two braids of steel wire.
Cover: synthetic rubber resistant to oil, abrasion and weather.
- **Working temperature:** From -40° C to +100° C.

Part n°	Ø in	DN	Ø out	Working Pressure (bar)	Working pressure (psi)	Burst pressure (bar)	Burst pressure (psi)	Vacuum (bar)	Bending radius (mm)	Weight (kg/m)
MS351103	4,8	3/16"	13,4	415	6017,5	1650	23925	-0,95	90	0,28
MS351104	6,3	1/4"	14,7	400	5800	1600	23200	-0,95	100	0,36
MS351105	8,2	5/16"	16,3	350	5075	1400	20300	-0,95	115	0,45
MS351106	9,8	3/8"	18,7	330	4785	1320	19140	-0,95	130	0,54
MS351108	12,9	1/2"	21,8	275	3987,5	1100	15950	-0,95	180	0,65
MS351110	16,2	5/8"	25	250	3625	1000	14500	-0,95	200	0,8
MS351112	19,2	3/4"	29,2	215	3117,5	850	12325	-0,8	240	0,94
MS351116	25,3	1"	36,7	165	2392,5	650	9425	-0,8	300	1,35
MS351120	32,2	1"1/4	46,5	125	1812,5	500	7250	-0,8	420	2,15
MS351124	38,2	1"1/2	52,8	90	1305	360	5220	-0,8	500	2,65
MS351132	51	2"	68,6	80	1160	320	4640	-0,8	630	3,42
MS351140	64	2" 1/2	78	70	1015	280	4061	-0,8	716	3,4
MS351148	76	3"	91	70	1015	280	4061	-0,8	910	4



1.4. Hydraulic hoses steel braid EN 857 1SC Hose



- **Composition:** Inner tube: synthetic rubber resistant to hydraulic, mineral and vegetable oil.
Reinforcement: one braid of steel wire.
Cover: synthetic rubber resistant to oil, abrasion and weather.
- **Working temperature:** From -40° C to +100° C.

Part n°	Ø in	DN	Ø out	Working Pressure (bar)	Working pressure (psi)	Burst pressure (bar)	Burst pressure (psi)	Vacuum (bar)	Bending radius (mm)	Weight (kg/m)
M1SC04	6,6	1/4"	11,9	225	3265	900	13060	-0,95	75	0,16
M1SC05	8,3	5/16"	13,7	215	3120	860	12470	-0,95	85	0,21
M1SC06	9,9	3/8"	15,7	180	2610	720	10440	-0,80	90	0,26
M1SC08	13	1/2"	19,5	160	2320	640	9280	-0,95	130	0,34
M1SC10	16,1	5/8"	22,3	130	1885	520	7540	-0,8	150	0,27
M1SC12	19,2	3/4"	25,9	105	1523	420	6090	-0,8	180	0,35
M1SC16	25,7	1"	33,6	88	1276	352	5104	-0,8	230	0,52

1.5. Hydraulic hoses steel braid EN 857 2SC Hose



- **Composition:** Inner tube: special synthetic rubber resistant to mineral, vegetable and hydraulic oil.
Reinforcement: two braids of steel wire.
Cover: synthetic rubber resistant to oil, abrasion and weather.
- **Working temperature:** From -40° C to +100° c.

Part n°	Ø in	DN	Ø out	Working Pressure (bar)	Working pressure (psi)	Burst pressure (bar)	Burst pressure (psi)	Vacuum (bar)	Bending radius (mm)	Weight (kg/m)
M2SC04	6,6	1/4"	13	400	5800	1600	23200	-0,95	75	0,25
M2SC05	8,3	5/16"	14,6	350	5075	1400	22050	-0,95	85	0,30
M2SC06	9,9	3/8"	16,6	330	4785	1320	19140	-0,95	90	0,37
M2SC08	13	1/2"	20	275	3990	1100	15950	-0,95	130	0,45
M2SC10	16,4	5/8"	23,9	250	3625	1000	14500	-0,80	170	0,61
M2SC12	19,5	3/4"	27,6	215	3120	860	12470	-0,80	200	0,76
M2SC16	26	1"	35,6	165	2395	660	9570	-0,80	250	1,15



1.6. Hydraulic hoses steel braid EN 856 4SP / SAE 100 R9R-R10 Hose



- **Composition:** Inner tube: special synthetic rubber resistant to mineral, vegetable and hydraulic oil.
Reinforcement: four braids of steel wire.
Cover: synthetic rubber, resistant to oil, abrasion and weather.
- **Working temperature:** From -40° C to +100° C.

Part n°	Ø in	DN	Ø out	Working Pressure (bar)	Working pressure (psi)	Burst pressure (bar)	Burst pressure (psi)	Bending radius (mm)	Weight (kg/m)
MS429004	6,4	1/4"	17,6	450	6525	1800	26100	150	0,585
MS429006	10	3/8"	21,3	445	6452,5	1780	25810	180	0,75
MS429008	13	1/2"	23,8	415	6017,5	1660	24070	230	0,9
MS429010	16	5/8"	27,8	350	5075	1400	20300	250	1,1
MS429012	19	3/4"	31,5	350	5075	1400	20300	300	1,5
MS429016	25,5	1"	38,5	280	4060	1120	16240	340	2
MS424820	32,2	1"1/4	49,5	210	3045	840	12180	460	3
MS424824	38,1	1"1/2	57,2	185	2682,5	740	10730	560	3,741
MS424832	51,2	2"	71,5	165	2392,5	660	9570	660	4,35

1.7. Hydraulic hoses steel braid EN 856 4SH Hose



- **Composition:** Inner tube: special synthetic rubber resistant to mineral, vegetable and hydraulic oil.
Reinforcement: four braids of steel wire.
Cover: synthetic rubber, resistant to oil, abrasion and weather.
- **Working temperature:** From -40° C to +100° C.

Part n°	Ø in	DN	Ø out	Working Pressure (bar)	Working pressure (psi)	Burst pressure (bar)	Burst pressure (psi)	Bending radius (mm)	Weight (kg/m)
MS456912	19	3/4"	31,5	420	6090	1680	24360	280	1,7
MS456916	25,2	1"	38,5	380	5510	1520	22040	340	2,5
MS456920	32,2	1"1/4	45,2	325	4712,5	1300	18850	460	3
MS456924	38,5	1"1/2	53,5	290	4206	1160	16824	560	3,6
MS456932	51,2	2"	68,1	250	3625	1000	14504	700	5



1.8. Hydraulic hoses steel braid EN 856 R13 / SAE 100 R13 Hose



- **Composition:** Inner tube: synthetic rubber.
Reinforcement: 4 braids of steel wire for 3/4" and 1". 6 braids of steel wire for 1" 1/4, 1" 1/2 and 2".
Cover: synthetic rubber, resistant to oil, abrasion and weather.
- **Working temperature:** From -40° C to +100° C.

Part n°	Ø in	DN	Ø out	Working Pressure (bar)	Working pressure (psi)	Burst pressure (bar)	Burst pressure (psi)	Bending radius (mm)	Weight (kg/m)
M471312	19	3/4"	32	345	5002,5	1380	20010	240	1,590
M471316	25,4	1"	38,4	345	5002,5	1380	20010	300	2,030
M471320	31,8	1"1/4	49,3	345	5002,5	1380	20010	420	3,815
M471324	38,1	1"1/2	57,3	345	5002,5	1380	20010	500	4,770
M471332	50,8	2"	71,6	345	5002,5	1380	20010	630	6,310

1.9. Hydraulic hoses steel braid SAE 100 R15 Hose



- **Composition:** Inner tube: special synthetic rubber resistant to mineral, vegetable and hydraulic oil.
Reinforcement: 4-6 braids of steel wire.
Cover: synthetic rubber, resistant to oil, abrasion and weather.
- **Working temperature:** From -40° C to +100° C.

Part n°	Ø in	DN	Ø out	Working Pressure (bar)	Working pressure (psi)	Burst pressure (bar)	Burst pressure (psi)	Bending radius (mm)	Weight (kg/m)
MS481512	19.40	3/4"	31.5	420	6090	1680	24360	265	1,850
MS481516	25.7	1"	38.5	420	6090	1680	24360	330	2,900
MS481520	32,2	1"1/4	50	420	6090	1680	24360	445	4,200
MS481524	38.5	1"1/2	56,5	420	6090	1680	24360	530	5,600
MS481532	51,1	2"	70.5	420	6090	1680	24360	680	6,900



1.10. Hydrowashing hose for hot water Hot water superservice 1SC black



- **Composition:** Inner tube: synthetic rubber resistant to hydraulic, mineral and vegetable oil.
Reinforcement: one braid of steel wire.
Cover: synthetic rubber resistant to oil, abrasion and weather.
- **Working temperature:** From -40° C to +155° C (peak).

Part n°	Ø in	DN	Ø out	Working Pressure (bar)	Working pressure (psi)	Burst pressure (bar)	Burst pressure (psi)	Bending radius (mm)	Weight (kg/m)
MSC0114N	6,5	1/4"	13,2	225	3263	900	13050	75	0,12
MSC0115N	8,1	5/16"	14,2	215	3118	860	12470	85	0,14
MSC0116N	9,7	3/8"	16,5	180	2610	720	10440	90	0,19
MSC0118N	12,9	1/2"	19,2	160	2320	640	9280	130	0,22

1.11. Hydrowashing hose for hot water Hot water superservice 2SC blue



- **Composition:** Inner tube: special synthetic rubber resistant to mineral, vegetable and hydraulic oil.
Reinforcement: two braids of steel wire.
Cover: synthetic rubber resistant to oil, abrasion and weather.
- **Working temperature:** From -40° C to +155° C (peak).

Part n°	Ø in	DN	Ø out	Working Pressure (bar)	Working pressure (psi)	Burst pressure (bar)	Burst pressure (psi)	Bending radius (mm)	Weight (kg/m)
MSC0214A	6,5	1/4"	13,9	400	5800	1600	23200	75	0,19
MSC0215A	8,3	5/16"	14,6	400	5800	1400	23200	85	0,30
MSC0216A	9,9	3/8"	16,6	400	5800	1320	19140	90	0,37
MSC0218A	12,9	1/2"	21	275	3988	1100	15950	130	0,36



1.12. Hydrowashing hose for hot water Hot water superservice 1SC blue



- **Composition:** Inner tube: synthetic rubber resistant to hydraulic, mineral and vegetable oil.
Reinforcement: one braid of steel wire.
Cover: synthetic rubber resistant to oil, abrasion and weather.
- **Working temperature:** From -40° C to +155° C (peak).

Part n°	Ø in	DN	Ø out	Working Pressure (bar)	Working pressure (psi)	Burst pressure (bar)	Burst pressure (psi)	Bending radius (mm)	Weight (kg/m)
MSC0114A	6,5	1/4"	13,2	225	3263	900	13050	75	0,12
MSC0115A	8,1	5/16"	14,2	215	3118	860	12470	85	0,14
MSC0116A	9,7	3/8"	16	180	2610	720	10440	90	0,19
MSC0118A	12,9	1/2"	19,2	160	2320	640	9280	130	0,22

1.13. Hydrowashing hose for hot water Hot water superservice 2SC grey



Part n°	Ø in	DN	Ø out	Working Pressure (bar)	Working pressure (psi)	Burst pressure (bar)	Burst pressure (psi)	Bending radius (mm)	Weight (kg/m)
MSC0205G	8.3	5/16"	14.6	400	5800	1400	20300		
MSC0206G	9.9	3/8"	16.6	400	5800	1320	23200		
MC0205G	8,3	5/16"	14,6	400	5800	1400	20300	85	0,300



2. FURTUNURI CU INSERTIE TEXTILA

2.1. Hydraulic hoses Textile braid EN 854 R6 / SAE 100 R6 Hose



- **Composition:** Inner tube: special NBR rubber resistant to hydraulic oil.
Reinforcement: one textile braid.
Cover: synthetic rubber resistant to oil, abrasion and weather.
- **Working temperature:** From -40°C to +100°C

Part n°	Ø in	DN	Ø out	Working Pressure (bar)	Working pressure (psi)	Burst pressure (bar)	Burst pressure (psi)	Bending radius (mm)	Weight (kg/m)
MSB2104	6,3	1/4"	13	28	406	112	1624	65	0,16
MSB2105	8,2	5/16"	14,5	28	406	112	1624	80	0,24
MSB2106	9,8	3/8"	16,5	28	406	112	1624	80	0,29
MSB2108	12,9	1/2"	20	28	406	112	1624	100	0,39
MSB2110	16,2	5/8"	23	24	348	96	1392	125	0,5
MSB2112	19,2	3/4"	26,5	21	304,5	83	1203,5	150	0,6
MSB2116	25	1"	34.5	20	290	80	1160	170	0,75



2.2. Hydraulic hoses Textile braid SAE 100 R4 Hose



- **Composition:** Inner tube: special NBR rubber resistant to hydraulic oil.
Reinforcement: two textile braids with one steel wire helix.
Cover: black rubber resistant to oil, abrasion and weather.
- **Working temperature** From -40° C to +100° C.

Part n°	Ø in	DN	Ø out	Working Pressure (bar)	Working pressure (psi)	Burst pressure (bar)	Burst pressure (psi)	Vacuum (bar)	Bending radius (mm)	Weight (kg/m)
ML701019	19	3/4"	32	21	305	84	1218	-0,8	127	0,725
ML701025	25,4	1"	37,4	17	247	68	986	-0,8	152	0,847
ML701032	31,8	1"1/4	45	14	203	56	812	-0,8	203	1,118
ML701038	38,1	1"1/2	52	10	145	40	580	-0,8	254	1,454
ML701050	50,8	2"	64	7	102	28	406	-0,8	305	1,837
ML701063	63,5	2"1/2	77	4	58	16	232	-0,8	356	2,310

2.3. Hydraulic hoses Textile braid EN 854 2TE Hose



- **Composition:** Inner tube: special NBR rubber resistant to hydraulic oil.
Reinforcement: one textile braid.
Cover: black rubber resistant to oil, abrasion and weather
- **Working temperature:** From -40°C to +100°C

Part n°	Ø in	DN	Ø out	Working Pressure (bar)	Working pressure (psi)	Burst pressure (bar)	Burst pressure (psi)	Bending radius (mm)	Weight (kg/m)
MB2204	6,4	1/4"	13,4	75	1087,5	300	4350	40	0,145
MB2205	8	5/16"	14,9	68	986	272	3944	50	0,165
MB2206	9,5	3/8"	16,5	63	913,5	252	3654	60	0,190
MB2208	12,7	1/2"	19,7	58	841	232	3364	70	0,230
MB2210	16	5/8"	23,9	50	725	200	2900	90	0,315
MB2212	19	3/4"	27	45	652,5	180	2610	110	0,370
MB2216	25,4	1"	34,4	40	580	160	2320	150	0,540



2.4. Hydraulic hoses Textile braid SAE 100 R5 Hose



- **Composition:** Inner tube: special synthetic rubber resistant to hydraulic oil.
Reinforcement: one textile braid + one braid of steel wire.
Cover: textil braid impregnated with synthetic rubber resistant to oil and weather
- **Working temperature** From -40° C to +100° C.

Part n°	Ø in	DN	Ø out	Working Pressure (bar)	Working pressure (psi)	Burst pressure (bar)	Burst pressure (psi)	Bending radius (mm)	Weight (kg/m)
M250304	4,8	3/16"	13,2	207	3002	828	12006	76	0,263
M250305	6,4	1/4"	14,3	207	3002	828	12006	86	0,296
M250306	7,9	5/16"	16,7	155	2248	620	8990	102	0,363
M250308	10,3	13/32"	18,9	138	2001	552	8004	117	0,408
M250310	12,7	1/2"	22,8	121	1755	484	7018	140	0,567
M250312	15,9	5/8"	26,8	103	1494	412	5974	165	0,698
M250316	22,2	7/8"	30,6	55	798	220	3190	187	0,741
M250320	28,6	1"1/8"	37,3	43	624	172	2494	229	0,975
M250324	34,9	1"3/8"	43,7	34	493	136	1972	267	1,134
M250332	46	1"13/16"	55,2	24	348	96	1392	337	1,351

2.5. Hydraulic hoses Textile braid EN 854 3TE Hose



- **Composition:** Inner tube: special NBR rubber resistant to hidraulic oil.
Reinforcement: two textile braids.
Cover: black rubber resistant to oil, abrasion and weather.
- **Working temperature:** From -40°C to +100°C

Part n°	Ø in	DN	Ø out	Working Pressure (bar)	Working pressure (psi)	Burst pressure (bar)	Burst pressure (psi)	Bending radius (mm)	Weight (kg/m)
MB2304	6,4	1/4"	14,4	145	2102,5	580	8410	45	0,165
MB2305	8	5/16"	16,9	130	1885	520	7540	55	0,215
MB2306	9,5	3/8"	18,5	110	1595	440	6380	70	0,240
MB2308	12,7	1/2"	21,7	93	1348,5	372	5394	85	0,295
MB2310	16	5/8"	25,9	80	1160	320	4640	105	0,400
MB2312	19	3/4"	29	70	1015	280	4060	130	0,455
MB2316	25,4	1"	35,9	55	797,5	220	3190	150	0,610



3. FURTUNURI PTFE-INOX

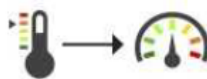
3.1. PTFE hoses Smooth PTFE FHL (light) / Smooth PTFE SAE100 R14



- **Composition:** Inner tube: smooth tube in PTFE. Fine thickness. Resistant to fire, chemically inert. Suitable for food use according to FDA norm.
Reinforcement: stainless steel AISI 304L braid.
- **Working temperature:** From -70° C to +260° C.

Part n°	Ø in	DN	Ø out	Working Pressure (bar)	Working pressure (psi)	Burst pressure (bar)	Burst pressure (psi)	Bending radius (mm)	Weight (kg/m)
M290003	3,9	1/8"	5,8	270	3916	1080	15664	25	0,055
M290005	5,1	3/16"	7,4	200	2900	800	11600	35	0,070
M290006	6,35	1/4"	9	175	2537	700	10150	45	0,090
M290008	7,9	5/16"	10,8	150	2175	600	8700	50	0,125
M290009	9,5	3/8"	12,4	135	1957	540	7830	55	0,145
M290013	12,7	1/2"	15,7	120	1740	480	6960	70	0,215
M290016	15,9	5/8"	19,1	100	1450	400	5800	130	0,265
M290020	19	3/4"	22,2	90	1305	360	5220	190	0,320
M290025	25,4	1"	29,3	65	942	260	3770	270	0,460

Temperature: 20° C / SAE 100 R14
 Vacuum pressure: 28 inHg (1/4" - 3/4") - 28 inHg (1")



50°C	100%
100°C	75%
150°C	50%
200°C	25%
260°C	10%



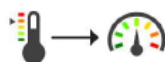
3.2. PTFE hoses Smooth PTFE FHM 2 Braids



- **Composition:** Inner tube: smooth tube in PTFE. Normal thickness. Resistant to fire, chemically inert. Suitable for food use according to FDA norm.
Reinforcement: two braids of stainless steel AISI 304.
- **Working temperature:** From -70° C to +260° C.

Part n°	Ø in	DN	Ø out	Working Pressure (bar)	Working pressure (psi)	Burst pressure (bar)	Burst pressure (psi)	Bending radius (mm)	Weight (kg/m)
M2901206	6,35	1/4"	10,5	365	5292,5	1100	15950	45	0,174
M2901208	7,9	5/16"	12,7	300	4350	900	13050	50	0,230
M2901209	9,5	3/8"	14,3	285	4132,5	850	12325	55	0,268
M2901213	12,7	1/2"	17,6	280	4060	750	10875	70	0,372
M2901216	15,9	5/8"	21	235	3407,5	700	10150	130	0,507
M2901219	19	3/4"	24,1	200	2900	600	8700	190	0,609
M2901225	25,4	1"	31,5	150	2175	450	6525	270	0,813

Temperature: 20° C



-60°C	95%
20°C	100%
100°C	75%
150°C	50%
200°C	25%
250°C	10%



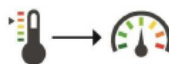
3.3. PTFE hoses Convoluted PTFE Convoluted PTFE 1 braid



- **Composition:** Inner tube: convoluted tube in PTFE, resistant to fire, chemically inert. Suitable for food use, according to FDA norm.
Reinforcement: stainless steel AISI 304 braid.
- **Working temperature:** From -70° C to +260° C.

Part n°	DN	Ø Inner Min.	Ø Inner Max.	Ø Out Min	Ø Out Max	Working Pressure (bar)	Working pressure (psi)	Burst pressure (bar)	Burst pressure (psi)	Bending radius (mm)	Weight (kg/m)
M292006	1/4"	5,95	6,45	9,14	9,65	135	2494	405	5874	18	0.15
M292009	3/8"	10	11	14,7	16,2	125	1740	375	5436	20	0.21
M292013	1/2"	13	14	18	19,7	110	1595	330	4785	25	0.27
M292016	5/8"	16	17	21,5	23	80	1160	240	3480	50	0.32
M292020	3/4"	19,5	20,7	25	27,5	70	1015	210	3045	65	0.39
M292025	1"	25,4	26,8	32	34,3	50	725	150	2175	90	0.55
M292032	1" 1/4	31,5	33	38,5	41	48	696	144	2080	125	0.74
M292038	1" 1/2	38	40	44,5	48	43	623	129	1864	145	0.86
M292050	2"	50,5	52,7	57	62	34	4493	102	1479	180	1.18

Temperature: 20° C



-60°C	95%
130°C	100%
150°C	80%
180°C	50%
200°C	30%
220°C	10%



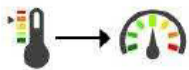
3.4. PTFE hoses Convoluted PTFE

Convoluted PTFE with fiberglass 1 braid



- **Composition:** Inner tube: convoluted tube in PTFE, resistant to fire, chemically inert. Suitable for food use, according to FDA norm.+ fiberglass band
Reinforcement: stainless steel AISI 304 braid.
- **Temperature:** from -54° C to +200° C

Part n°	Ø in	DN	Ø out	Working Pressure (bar)	Working pressure (psi)	Burst pressure (bar)	Burst pressure (psi)	Bending radius (mm)
M298009	9,65	3/8"	15	69	1000	276	4000	25
M298013	13,45	1/2"	19,18	86	1250	345	5000	38
m298020	19,85	3/4"	27,2	76	1100	304	4400	63
M298025	25,88	1"	32,90	60	875	240	3500	76
M298032	32,30	1" 1/4	39,78	60	875	240	3500	89



-60°C	95%
130°C	100%
150°C	80%
180°C	50%
200°C	30%



3.5. PTFE hoses Convoluted PTFE

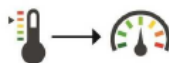
Anti-static convoluted PTFE 1 braid



- **Composition:** Inner tube: convoluted tube in PTFE, resistant to fire, chemically inert. Suitable for food use,
Reinforcement: stainless steel AISI 304 braid.
- **Working temperature:** From -70° C to +260° C.

Part n°	DN	Ø Inner Min.	Ø Inner Max.	Ø Out Min	Ø Out Max	Working Pressure (bar)	Working pressure (psi)	Burst pressure (bar)	Burst pressure (psi)	Bending radius (mm)
M293009	3/8"	10	11	14,7	16,2	120	1740	480	6960	30
M293013	1/2"	13	14	18	19,7	110	1595	440	6380	40
M293020	3/4"	19,5	20,7	25	27,5	70	1015	280	4060	80
M293025	1"	25,4	26,8	32	34,3	50	725	200	2900	100

Temperature: 20° C



-60°C	95%
130°C	100%
150°C	80%
180°C	50%
200°C	30%
220°C	10%



3.6. PTFE hoses

PTFLEX Smooth PTFE



- **Material:** PTFE T62X according to “ASTM D4895, Type 1, Grade4, Class B”
- **Certification:** In compliance; FDA, EU Food, USP Class VI, Anti-static (AS), EN;16643 & Material Certification.
- **Working temperature:** From -60° C to +260° C.

Part n°	Ø in	DN	Ø out	Working Pressure (bar)	Working pressure (psi)	Burst pressure (bar)	Burst pressure (psi)	Bending radius (mm)
M294020	19.5	3/4"	24	60	870	240	3480	50
M294025	25.5	1"	31	50	725	200	2900	70
M294032	31.8	1"1/4	39.3	45	653	180	2610	100

Temperature: 20° C

3.7. Stainless steel hose Convoluted stainless steel hoses and AISI 304 Braid Convoluted S.S. AISI 316 hose with one braid S.S. AISI 316



- **Composition:** Inner tube: stainless steel AISI 316.
Reinforcement: stainless steel AISI 316 braid.
- **Working temperature:** From -270°C to +550°C.

Part n°	DN	Ø in	Ø out	Working Pressure (bar)	Working pressure (psi)	Burst pressure (bar)	Burst pressure (psi)	Static bend radius (mm)	Flexing bend radius (mm)	Weight (kg/m)
M93161006	1/4"	6.2	10,7	120	1740	480	6960	25	85	0,3
M93161010	3/8"	10.3	15,5	85	1232,5	340	4930	38	140	0,4
M93161012	1/2"	12.2	17,8	80	1160	320	4640	45	140	0,5
M93161020	3/4"	20.2	28,3	64	928	256	3712	70	170	0,65
M93161025	1"	25.4	33,5	50	725	200	2900	85	190	0,8
M93161032	1" 1/4	34.3	42,8	40	580	160	2320	105	260	1,5
M93161040	1" 1/2	40.1	51,2	35	507,5	140	2030	130	300	1,65
M93161050	2"	50.3	62	30	435	120	1740	160	320	1,8
M93161065	2" 1/2	65.6	83	24	348	96	1392	180	410	2,4
M93161080	3"	80.3	97	18	261	72	1044	200	450	3
M93161100	4"	100.8	119	16	232	64	928	290	560	3,7

*** Review attached PDF***
Working Pressure is at 20°C.



3.8. Stainless steel hose

Convolute stainless steel hoses and AISI 304 Braid

Convolute S.S. AISI 316 hose with one braid S.S. AISI 304 extra flexible



- **Composition:** Inner tube: stainless steel AISI 316
Reinforcement: stainless steel AISI 304 braid.
- **Working temperature:** From -270°C to +550°C.

Part n°	DN	Ø in	Ø out	Working Pressure (bar)	Working pressure (psi)	Burst pressure (bar)	Burst pressure (psi)	Static bend radius (mm)	Flexing bend radius (mm)	Weight (kg/m)
M93161304020EF	3/4"	20	28.3	64	928	256	3712	55	130	0.65
M93161304025EF	1"	25	34.30	50	725	200	2900	65	150	0.8
M93161304032EF	1" 1/4	34.3	42.8	40	580	160	2320	75	230	1.5
M93161304040EF	1" 1/2	39.8	51.7	35	508	140	2030	90	240	1.65
M93161304050EF	2"	50	62.5	30	435	120	1740	110	260	1.8

3.9. STAINLESS STEEL HOSE

Convolute stainless steel hoses and AISI 304 Braid

Convolute S.S. AISI 316 hose with one braid S.S. AISI 304



- **Composition:** Inner tube: stainless steel AISI 316
Reinforcement: stainless steel AISI 304 braid.
- **Working temperature:** From -270°C to +550°C.

Part n°	DN	Ø in	Ø out	Working Pressure (bar)	Working pressure (psi)	Burst pressure (bar)	Burst pressure (psi)	Static bend radius (mm)	Flexing bend radius (mm)	Weight (kg/m)
M93161304006	1/4"	6.2	10,7	120	1740	480	6960	25	85	0.3
M93161304010	3/8"	10.3	15,5	85	12325	340	4930	38	140	0.4
M93161304012	1/2"	12.2	17,8	80	1160	320	4640	45	140	0.5
M93161304020	3/4"	20.2	28,3	64	928	256	3712	70	170	0.65
M93161304025	1"	25.4	33,5	50	725	200	2900	85	190	0.8
M93161304032	1" 1/4	34.3	42,8	40	580	160	2320	105	260	1.5
M93161304040	1" 1/2	40.1	51,2	35	5075	140	2030	130	300	1.65
M93161304050	2"	50.3	62	30	435	120	1740	160	320	1.8
M93161304065	2" 1/2	65.6	83	24	348	96	1392	180	410	2.4
M93161304080	3"	80.3	97	18	261	72	1044	200	450	3.3
M93161304100	4"	100.8	119	16	232	64	928	290	560	3.7



3.10. STAINLESS STEEL HOSE

Convolute stainless steel hoses and AISI 304 Braid

Convolute S.S. AISI 321 hose with two braids S.S. AISI 304



- **Composition:** Inner tube: stainless steel AISI 321.
Reinforcement: two braids of stainless steel AISI 304.
- **Working temperature:** From -270°C to +550°C.

Part n°	DN	Ø in	Ø out	Working Pressure (bar)	Working pressure (psi)	Burst pressure (bar)	Burst pressure (psi)	Static bend radius (mm)	Flexing bend radius (mm)	Weight (kg/m)
M93212006	1/4"	6,2	11,8	192	2784	768	11136	25	85	0,4
M93212010	3/8"	10,3	16,5	136	1972	544	7888	38	140	0,55
M93212012	1/2"	12,2	19	128	1856	512	7424	45	140	0,7
M93212020	3/4"	20,2	30	102,4	1484,8	409,6	5939,2	70	170	0,975
M93212025	1"	25,4	35	80	1160	320	4640	85	190	1,2
M93212032	1" 1/4	34,3	44,5	64	928	256	3712	105	260	2,05
M93212040	1" 1/2	40,1	52,8	56	812	224	3248	130	300	2,6
M93212050	2"	50,3	63,8	48	696	192	2784	160	320	2,8
M93212065	2" 1/2	65,6	84,8	38,4	556,8	153,6	2227,2	180	410	3,6
M93212080	3"	80,3	98,7	28,8	417,6	115,2	1670,4	200	450	4,6
M93212100	4"	100,8	121	25,6	371,2	102,4	1484,8	290	560	5,6



3.11. Stainless steel hose

Convolute stainless steel hoses and AISI 304 Braid

Convolute S.S. AISI 321 hose with one braid S.S. AISI 304



- **Composition:** Inner tube: stainless steel AISI 321.
Reinforcement: stainless steel AISI 304 braid.
- **Working temperature:** From -270°C to +550°C.

Part n°	DN	Ø in	Ø out	Working Pressure (bar)	Working pressure (psi)	Burst pressure (bar)	Burst pressure (psi)	Static bend radius (mm)	Flexing bend radius (mm)	Weight (kg/m)
M93211006	1/4"	6.2	10.7	120	1740	480	6960	25	85	0,3
M93211010	3/8"	10.3	15.5	85	1232,5	340	4930	38	140	0,4
M93211012	1/2"	12.2	17.8	80	1160	320	4640	45	140	0,5
M93211016	5/8"	16.2	23	80	1160	320	4640	58	160	0,6
M93211020	3/4"	20.2	28.3	64	928	256	3712	70	170	0,65
M93211025	1"	25.4	33.5	50	725	200	2900	85	190	0,8
M93211032	1" 1/4	34.3	42.8	40	580	160	2320	105	260	1,5
M93211040	1" 1/2	40.1	51.2	35	507,5	140	2030	130	300	1,65
M93211050	2"	50.3	62	30	435	120	1740	160	320	1,8
M93211065	2" 1/2	65.6	83	24	348	96	1392	180	410	2,4
M93211080	3"	80.3	97	18	261	72	1044	200	450	3
M93211100	4"	100.8	119	16	232	64	928	290	560	3,7



4. FURTUNURI TERMOPLASTICHE

4.1. Thermoplastic hoses -Textile braid SAE 100 R7



- **Composition:** Inner tube: polyester elastomer.
Reinforcement: one or two braids of synthetic fiber.
Cover: black pinpricked polyurethane.
- **Working temperature:** From -40° C to +100° C limited to +70° C for air and water based fluids.

Part n°	Ø in	DN	Ø out	Working Pressure (bar)	Working pressure (psi)	Burst pressure (bar)	Burst pressure (psi)	Bending radius (mm)	Weight (kg/m)
MT07002	4	1/8"	8,3	210	3000	840	12000	25	0,045
MT07003	5	3/16"	9,6	210	3000	840	12000	25	0,060
MT07004	6,5	1/4"	12,2	210	3000	840	12000	35	0,095
MT07005	8,1	5/16"	14,3	190	2700	760	10800	45	0,130
MT07006	9,7	3/8"	16	160	2300	640	9200	55	0,145
MT07008	13	1/2"	20,3	140	2000	560	8000	75	0,215
MT07010	16,3	5/8"	23,7	105	1500	420	6000	110	0,275
MT07012	19,5	3/4"	27,1	90	1300	360	5200	140	0,330
MT07016	25,9	1"	34	70	1000	280	4000	190	0,460



4.2. Thermoplastic hoses -Textile braid SAE 100 R8



- **Composition:** Inner tube: polyester elastomer.
Reinforcement: one or two braids of "aramid" fiber.
Cover: black pinpricked polyurethane.
- **Working temperature:** From -40° C to +100° C limited to +70° C for air and water based fluids.

Part n°	Ø in	DN	Ø out	Working Pressure (bar)	Working pressure (psi)	Burst pressure (bar)	Burst pressure (psi)	Bending radius (mm)	Weight (kg/m)
MT08003	5	3/16"	8,9	350	5000	1400	20000	30	0,050
MT08004	6,5	1/4"	11,5	350	5000	1400	20000	50	0,085
MT08005	8,1	5/16"	13,4	300	4300	1200	17200	55	0,105
MT08006	9,7	3/8"	15,5	280	4000	1120	16000	60	0,135
MT08008	13	1/2"	19,9	245	3500	980	14000	80	0,200
MT08010	16,3	5/8"	23,4	200	2900	800	11600	125	0,250
MT08012	19,5	3/4"	26,9	165	2300	660	9200	150	0,320
MT08016	25,9	1"	34,2	140	2000	560	8000	200	0,440



4.3. Thermoplastic hoses -Textile braid SAE 100 R7 non-conductive



- **Composition:** Inner tube: polyester elastomer.
Reinforcement: one or two braids of synthetic fiber.
Cover: orange polyurethane.
- **Working temperature:** From -40° C to +100° C limited to +70° C for water based fluids.
- **SAE 100R7 // EN855-R7 // ISO3949-R7** - Hoses meet standards SAE J517/J343 and EN855 for non conductivity where maximum electrical leakage shall not exceed 50μA when a 152 mm sample is subject to 37.5 KV for 5 minutes equivalent to 250 KV/meter.
- **Description:** Meets or exceeds SAE 100R7 - Medium pressure hose suitable for petroleum or high insulation or non-conductivity in high tension environment e.g. near electrical power lines.

Part n°	Ø in	DN	Ø out	Working Pressure (bar)	Working pressure (psi)	Burst pressure (bar)	Burst pressure (psi)	Bending radius (mm)	Weight (kg/m)
MT07103	5,00	3/16"	9,60	210	3000	840	12000	25	0,060
MT07104	6,50	1/4"	12,20	210	3000	840	12000	35	0,100
MT07105	8,10	5/16"	14,30	190	2700	760	10800	45	0,130
MT07106	9,70	3/8"	16,00	160	2300	640	9200	55	0,150
MT07108	13,00	1/2"	20,30	140	2000	560	8000	75	0,220
MT07110	16,30	5/8"	23,70	105	1500	420	6000	110	0,280
MT07112	19,50	3/4"	27,10	90	1300	360	5200	140	0,335
MT07116	25,90	1"	34,00	70	1000	280	4000	190	0,455



4.4. Thermoplastic hoses- textile braid SAE 100 R7 Twin



- **Composition:** Inner tube: polyester elastomer.
Reinforcement: one or two braids of synthetic fiber.
Cover: black pinpricked polyurethane.
- **Working temperature:** From -40° C to +100° C limited to +70° C for air and water based fluids.

Part n°	Ø in	DN	Ø out	Working Pressure (bar)	Working pressure (psi)	Burst pressure (bar)	Burst pressure (psi)	Bending radius (mm)	Weight (kg/m)
MT27003	5	3/16"	9,6	210	3000	840	12000	25	0,120
MT27004	6,5	1/4"	12,2	210	3000	840	12000	35	0,200
MT27005	8,1	5/16"	14,3	175	2500	700	10000	45	0,260
MT27006	9,7	3/8"	16	160	2300	640	9200	55	0,290
MT27008	13	1/2"	20,3	140	2000	560	8000	75	0,440

4.5. Thermoplastic hoses - textile braid SAE 100 R8 Twin



- **Composition:** Inner tube: polyester elastomer.
Reinforcement: one or two braids of "aramid" fiber.
Cover: black pinpricked polyurethane.
- **Working temperature:** From -40° C to +100° C limited to +70° C for air and water based fluids.

Part n°	Ø in	DN	Ø out	Working Pressure (bar)	Working pressure (psi)	Burst pressure (bar)	Burst pressure (psi)	Bending radius (mm)	Weight (kg/m)
MT28004	6,5	1/4"	11,5	350	5000	1400	20000	50	0,170
MT28005	8,1	5/16"	13,4	300	4300	1200	17200	55	0,210
MT28006	9,7	3/8"	15,5	280	4000	1120	16000	60	0,270
MT28008	13	1/2"	19,9	245	3500	980	14000	80	0,400



4.6. Thermoplastic hoses textile braid SAE 100 R8 non-conductive



- **Composition:** Inner tube: polyester elastomer.
Reinforcement: one or two braids of "aramid" fiber.
Cover: orange polyurethane.
- **Working temperature:** From -40° C to +100° C limited to +70° C for water based fluids.
- **SAE 100R8//EN855-R8 //ISO3949-R8** Hoses meet standards SAE J517/J343 and EN855 for non conductivity where maximum electrical leakage shall not exceed 50µA when a 152 mm sample is subject to 37.5 KV for 5 minutes equivalent to 250 KV/meter.
- **Description:** Meets or exceeds SAE 100R8 - Medium pressure hose suitable for petroleum or high insulation or non-conductivity in high tension environment e.g. near electrical power lines.

Part n°	Ø in	DN	Ø out	Working Pressure (bar)	Working pressure (psi)	Burst pressure (bar)	Burst pressure (psi)	Bending radius (mm)	Weight (kg/m)
MT08104	6,5	1/4"	11,5	350	5000	1400	20000	50	0,085
MT08105	8,1	5/16"	13,4	300	4300	1200	17200	55	0,105
MT08106	9,7	3/8"	15,5	280	4000	1120	16000	60	0,135
MT08108	13	1/2"	19,9	245	3500	980	14000	80	0,205
MT08110	16,3	5/8"	23,4	200	2900	800	11600	125	0,250
MT08112	19,5	3/4"	27,1	165	2300	660	9200	150	0,320
MT08116	25,9	1"	34,2	140	2000	560	8000	200	0,440



4.7. Thermoplastic hoses -steel braid Steel braid thermoplastic elastomer



- **Composition:** Inner tube: polyester elastomer.
Reinforcement: one braid of steel wire.
Cover: black polyurethane.
- **Working temperature:** From -40° C to +100° C limited to +70° C for air and water based fluids.

Part n°	Ø in	DN	Ø out	Working Pressure (bar)	Working pressure (psi)	Burst pressure (bar)	Burst pressure (psi)	Bending radius (mm)	Weight (kg/m)
MT09003	5,00	3/16"	9,70	360	5200	1440	20800	30	0,125
MT09004	6,50	1/4"	11,70	310	4500	1240	18000	40	0,165
MT09005	8,10	5/16"	13,20	250	3600	1000	14400	55	0,190
MT09006	9,80	3/8"	15,50	225	3200	900	12800	65	0,230
MT09008	13,00	1/2"	18,80	190	2700	760	10800	85	0,300
MT09010	16,30	5/8"	22,00	140	2000	560	8000	115	0,335
MT09012	19,50	3/4"	25,80	115	1600	460	6400	145	0,460
MT09016	25,80	1"	33,40	95	1300	380	5200	180	0,640

4.8. Thermoplastic hoses steel braid Steel braid twin thermoplastic elastomer



- **Composition:** Inner tube: polyester elastomer.
Reinforcement: one braid of steel wire.
Cover: black polyurethane.
- **Working temperature:** From -40° C to +100° C limited to +70° C for air and water based fluids.

Part n°	Ø in	DN	Ø out	Working Pressure (bar)	Working pressure (psi)	Burst pressure (bar)	Burst pressure (psi)	Bending radius (mm)	Weight (kg/m)
MT29003	5,00	3/16"	9,70	360	5200	1440	20800	30	0,240
MT29004	6,40	1/4"	11,60	310	4500	1240	18000	40	0,330
MT29005	8,10	5/16"	13,20	250	3600	1000	14400	55	0,380
MT29006	9,80	3/8"	15,50	225	3200	900	12800	65	0,460
MT29008	13,00	1/2"	18,80	190	2700	760	10800	85	0,600



4.9. Thermoplastic hoses -steel braid Steel braid thermoplastic elastomer for paint



- **Composition:** Inner tube: polyamide.
Reinforcement: one braid of steel wire.
Cover: blue polyurethane.
- **Working temperature:** From -40° C to +100° C limited to +70° C for air and water based fluids.

Part n°	Ø in	DN	Ø out	Working Pressure (bar)	Working pressure (psi)	Burst pressure (bar)	Burst pressure (psi)	Bending radius (mm)	Weight (kg/m)
MT099003	5	3/16"	9,7	360	5200	1440	20800	30	0,12
MT099004	6,5	1/4"	11,7	310	4500	1240	18000	40	0,155
MT099006	9,8	3/8"	15,5	225	3200	900	12800	65	0,230
MT099008	13	1/2"	18,8	190	2700	760	10800	85	0,295
MT099012	19,5	3/4"	25,8	115	1600	460	6400	145	0,425

4.10. Thermoplastic hoses steel braid Thermoplastic hose 700 bar



- **Composition:** Inner tube: polyester elastomer.
Reinforcement: one or two braids of "Aramid" fiber plus one braid of steel wire.
Cover: black polyurethane.
- **Working temperature:** From -40° to +100° C, limited to +70° C for air and water based fluids.

Part n°	Ø in	DN	Ø out	Working Pressure (bar)	Working pressure (psi)	Burst pressure (bar)	Burst pressure (psi)	Bending radius (mm)	Weight (kg/m)
MT70004	6,6	1/4"	12,7	700	10000	2800	40000	35	0,180
MT70006	9,8	3/8"	18,7	700	10000	2800	40000	90	0,330



4.11. Thermoplastic hoses steel braid Steel braid elastomer for chemical products



- **Composition:** Inner tube: polyamid PA12
Reinforcement: 2 braids of steel wire.
Cover: blue polyurethane.
- **Working temperature:** From -40° C to +100° C limited to +70° C for air and water based fluids.

Part n°	Ø in	DN	Ø out	Working Pressure (bar)	Working pressure (psi)	Burst pressure (bar)	Burst pressure (psi)	Bending radius (mm)	Weight (kg/m)
MT096004	6,40	1/4"	12,80	425	6100	1700	24400	40	0,240
MT096006	9,80	3/8"	16,80	350	5000	1400	20000	65	0,365
MT096008	13,00	1/2"	20,20	300	4300	1200	17200	85	0,440
MT096010	16,30	5/8"	23,50	250	3600	1000	14400	115	0,560
MT096012	19,50	3/4"	27,80	215	3100	860	12400	170	0,675
MT096016	25,80	1"	35,20	190	2700	760	10800	180	0,950