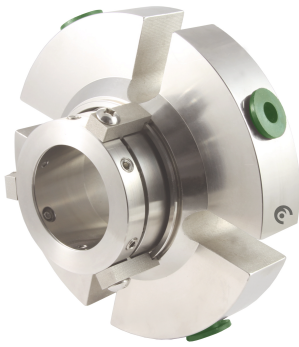


LDC22-F



COMPONENTS:

- 1p Rotating contact surface product side
- 2p Stationary contact surface product side
- 1a Stationary contact surface atmospheric side
- 2a Rotating contact surface atmospheric side
- 3 O-rings
- 4 Springs
- 5 Set screws
- 6 Sleeve
- 7 Flange
- 8 Setting clips
- 9 Flat gasket
- 10 Drive ring

SECTORS:



CHARACTERISTICS:

- **Balanced.**
- **Multispring.**
- **Not dependent on the rotation direction.**
- **Barrier fluid connections.**

OPERATING LIMITS:

$d_1 = 25 \div 100 \text{ mm}$ $p = 28 \text{ kg/cm}^2$
 $v = 20 \text{ m/s}$ $t = -15 \div +200^\circ\text{C} (*)$

(*) The temperature resistance depends on the material of the secondary seals used.

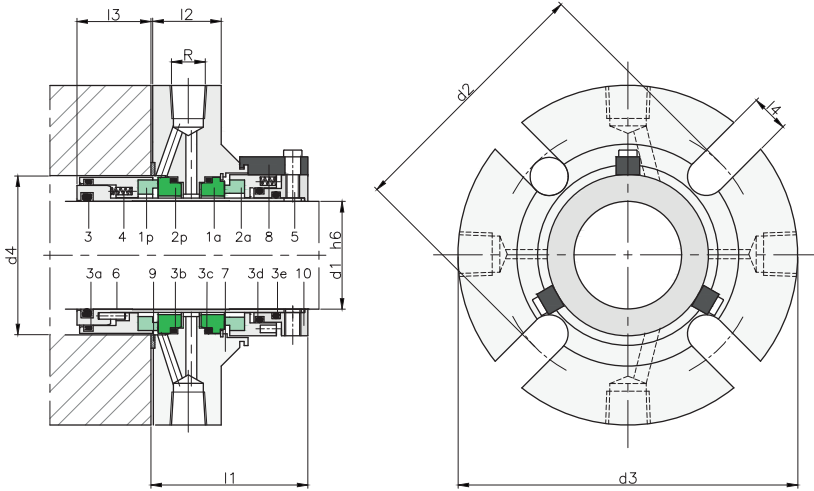
The operating limits are defined by the PV factor which is determined for the sealing system characteristics and those of the application.

DESCRIPTION:

Double cartridge seal with a "face to face" arrangement which permits operation with barrier fluids (pressurised or not pressurised) and the flushing of the surfaces on the product side. The protected multispring system in the rotating part absorbs the transmission of misalignments, knocks, oscillations and vibrations of the shaft on the contact surfaces and extends the useful life in unfavourable operating conditions. Suitable for applications with highly viscous, sticky, catalytic fluids which have very few lubricant properties or are highly abrasive.

CONNECTIONS:

From 25 mm to 60 mm: 1/4" NPT.
 From 63 mm to 110 mm: 3/8" NPT.



DIMENSIONS CHART

Dimensions in mm

Shaft										
	mm	d ₂ min.	d ₂ max.	d ₃	d ₄ min.	d ₄ max.	l ₁	l ₂	l ₃	l ₄
25	68.0	80.0	103.9	44.0	50.0	57.8	25.4	28.0	12.5	
28	70.0	83.0	107.2	47.0	52.0	57.8	25.4	28.0	12.5	
30	73.0	86.0	110.2	49.0	56.0	57.8	25.4	28.0	12.5	
32	73.0	86.0	110.2	51.0	56.0	57.8	25.4	28.0	12.5	
33	73.0	86.0	110.2	51.0	56.0	57.8	25.4	28.0	12.5	
35	76.0	89.0	113.5	54.0	59.0	57.8	25.4	28.0	12.5	
38	81.0	102.0	126.2	57.0	63.0	57.8	25.4	28.0	14.7	
40	86.0	100.0	126.2	59.0	66.0	57.8	25.4	28.0	14.7	
43	89.0	112.0	138.9	63.0	69.0	57.8	25.4	28.0	14.7	
45	89.0	112.0	138.9	65.0	69.0	57.8	25.4	28.0	14.7	
48	92.0	112.0	138.9	67.0	72.0	57.8	25.4	28.0	14.7	
50	95.0	112.0	138.9	69.0	75.0	57.8	25.4	28.0	14.7	
53	102.0	119.0	151.6	73.0	79.0	57.8	25.4	28.0	17.5	
55	104.0	125.0	158.0	75.0	81.0	57.8	25.4	28.0	17.5	
58	104.0	125.0	158.0	77.0	81.0	57.8	25.4	28.0	17.5	
60	108.0	125.0	158.0	80.0	86.0	57.8	25.4	28.0	17.5	
63	111.0	132.0	164.3	83.0	89.0	57.8	25.4	28.0	17.5	
65	117.0	161.0	193.7	89.0	95.0	64.8	28.6	34.9	17.5	
68	120.0	164.0	196.9	93.0	98.0	64.8	28.6	34.9	17.5	
70	122.0	167.0	200.0	95.0	100.0	64.8	28.6	34.9	17.5	
75	127.0	170.0	203.2	100.0	105.0	64.8	28.6	34.9	17.5	
80	131.0	173.0	206.4	104.0	109.0	64.8	28.6	34.9	17.5	
85	143.0	179.0	212.7	110.0	118.0	64.8	28.6	34.9	20.5	
90	148.0	185.0	219.1	115.0	123.0	64.8	28.6	34.9	20.5	
95	153.0	189.0	222.3	120.0	128.0	64.8	28.6	34.9	20.5	
100	158.0	195.0	228.6	126.0	133.0	64.8	28.6	34.9	20.5	

Dimensions subject to changes or modifications.

Dimensions in inches

Shaft											
	(")	mm	d ₂ min.	d ₂ max.	d ₃	d ₄ min.	d ₄ max.	l ₁	l ₂	l ₃	l ₄
1,000	25,40	68,6	79,4	104,8	44,5	50,8	57,9	25,4	28,2	12,7	
1,125	28,58	69,9	82,6	108,0	47,6	54,0	57,9	25,4	28,2	12,7	
1,250	31,75	73,0	85,7	111,1	50,8	57,2	57,9	25,4	28,2	12,7	
1,375	34,93	76,2	85,7	111,1	54,0	60,3	57,9	25,4	28,2	12,7	
1,500	38,10	79,4	101,6	127,0	57,2	63,5	57,9	25,4	28,2	12,7	
1,625	41,28	85,7	101,6	127,0	60,3	66,7	57,9	25,4	28,2	12,7	
1,750	44,45	85,7	101,6	139,7	63,5	69,9	57,9	25,4	28,2	12,7	
1,875	47,63	88,9	101,6	139,7	66,7	73,0	57,9	25,4	28,2	12,7	
2,000	50,80	92,1	114,3	152,4	69,9	76,2	57,9	25,4	28,2	12,7	
2,125	53,98	95,3	114,3	152,4	73,0	79,4	57,9	25,4	28,2	12,7	
2,250	57,15	101,6	133,4	165,1	76,2	82,6	57,9	25,4	28,2	15,9	
2,375	60,33	104,8	133,4	165,1	79,4	85,7	57,9	25,4	28,2	15,9	
2,500	63,50	108,0	139,7	177,8	82,6	88,9	57,9	25,4	28,2	15,9	
2,625	66,68	114,3	139,7	177,8	88,9	95,3	64,8	28,6	34,8	15,9	
2,750	69,85	120,7	139,7	177,8	95,3	98,4	64,8	28,6	34,8	15,9	
2,875	73,03	123,8	152,4	190,5	98,4	101,6	64,8	28,6	34,8	15,9	
3,000	76,20	127,0	152,4	190,5	101,6	104,8	64,8	28,6	34,8	15,9	
3,125	79,38	127,0	152,4	190,5	104,8	108,0	64,8	28,6	34,8	15,9	
3,250	82,55	133,4	165,1	203,2	108,0	114,3	64,8	28,6	34,8	19,1	
3,375	85,73	136,5	165,1	203,2	111,1	117,5	64,8	28,6	34,8	19,1	
3,500	88,90	139,7	165,1	203,2	114,3	120,7	64,8	28,6	34,8	19,1	
3,625	92,08	142,9	177,8	215,9	117,5	123,8	64,8	28,6	34,8	19,1	
3,750	95,25	146,1	177,8	215,9	120,7	127,0	64,8	28,6	34,8	19,1	
3,875	98,43	149,2	177,8	215,9	123,8	130,2	64,8	28,6	34,8	19,1	
4,000	101,60	152,4	190,5	228,6	127,0	133,4	64,8	28,6	34,8	19,1	